

BraindumpQuiz



- ✓ Online Tool, Convenient, easy to study.
- ✓ Instant Online Access
- ✓ Supports All Web Browsers
- ✓ Practice Online Anytime
- ✓ Test History and Performance Review
- ✓ Supports Windows / Mac / Android / iOS, etc.



- ✓ Installable Software Application
- ✓ Simulates Real Exam Environment
- ✓ Builds Exam Confidence
- ✓ Supports MS Operating System
- ✓ Two Modes For Practice
- ✓ Practice Offline Anytime



- ✓ Printable PDF Format
- ✓ Prepared by IT Experts
- ✓ Instant Access to Download
- ✓ Study Anywhere, Anytime
- ✓ 365 Days Free Updates
- ✓ Free PDF Demo Available



Security & Privacy

We respect customer privacy. We use McAfee's security service to provide you with utmost security for your personal information & peace of mind.



365 Days Free Updates

Free update is available within 365 days after your purchase. After 365 days, you will get 50% discounts for updating.



Money Back Guarantee

Full refund if you fail the corresponding exam in 90 days after purchasing. And Free get any another product.



Instant Download

After Payment, our system will send you the products you purchase in mailbox in a minute after payment. If not received within 2 hours, please contact us.

<http://www.braindumpquiz.com/>

Best exam materials provider - BraindumpQuiz! Choosing us, Benefit more!

Exam : **H12-321-ENU**

Title : HCIP-WLAN CEWA(Huawei Certified ICT Professional-Wireless Local Area Network-Constructing Enterprise WLAN Architecture)

Vendor : Huawei

Version : DEMO

NO.1 What is the minimum number of Portal page push conditions that you must configure when configuring a Portal page push rule of the Agile Controller?

- A. 4
- B. 1
- C. 2
- D. 3

Answer: B

NO.2 Which statement about the Mesh network is FALSE?

- A. Multiple APs can form a Mesh network.
- B. The Mesh network conforms to IEEE 802.11m.
- C. The Mesh network can both provide user access and forward wireless link signals.
- D. Signals are routed from an AP to another within the Mesh network, and then transmitted to the wired network through the APs on a fixed path.

Answer: B

NO.3 What information does an authorized AP need to collect and report to the AC during passive neighbor probe? (Multiple Choice)

- A. Interference between APs
- B. Infrared ray interference
- C. Interference from non-Wi-Fi devices
- D. Interference from rogue APs

Answer: A,C,D

NO.4 In public places where WLAN services are available, such as banks and airports, users can connect to the WLANs after associating with corresponding SSIDs. If a rogue AP is deployed and provides bogus SSIDs the same as or similar to authorized SSIDs, users may connect to the rogue AP, which brings security risks.

Which of the following functions can solve this problem?

- A. WIDS rogue device countermeasure
- B. Bogus SSID identification rules + WIDS rogue device countermeasure
- C. WIDS attack detection + WIDS rogue device countermeasure
- D. WIDS attack detection + WIDS blacklist

Answer: B

NO.5 Which of the following statements about the active CAPWAP link setup procedure are TRUE? (Multiple Choice)

- A. In Discovery phase, after dual-link backup is enabled, an AP broadcasts a Discovery Request packet.
- B. If the AC priorities are the same, the AP compares the loads of the ACs, that is, the number of APs. The AP selects the AC connecting to fewer APs as the active AC.
- C. After receiving the Discovery Response packets, the AP selects an active AC based on AC priorities, loads, and IP addresses and sets up an active CAPWAP link with the active A

D. As long as the active and standby ACs work properly, they will return Discovery Response packets to the AP. The Discovery Response packets contain the dual-link backup flags, priorities, loads, and IP addresses of the ACs.

Answer: C,D

NO.6 After channel switching without service interruption is configured on an AP, when the AP channel needs to be switched, the AP will notify associated STAs in advance and switch to the new channel with STAs at the same time without interrupting services.

A. FALSE

B. TRUE

Answer: B

NO.7 Which of the following is the WLAN security threat?

A. Weak IV attacks

B. WIDS

C. WIPS

D. WDS

Answer: A

NO.8 Multiple AD directory servers are used as external source on a large-scale network. Some user information fails to be synchronized to the Agile Controller.

What is the possible cause of the failure? (Multiple Choice)

A. There are no duplicate OU names or user group names on the AD directory servers, but different synchronization types are used to synchronize user information from different AD directory servers.

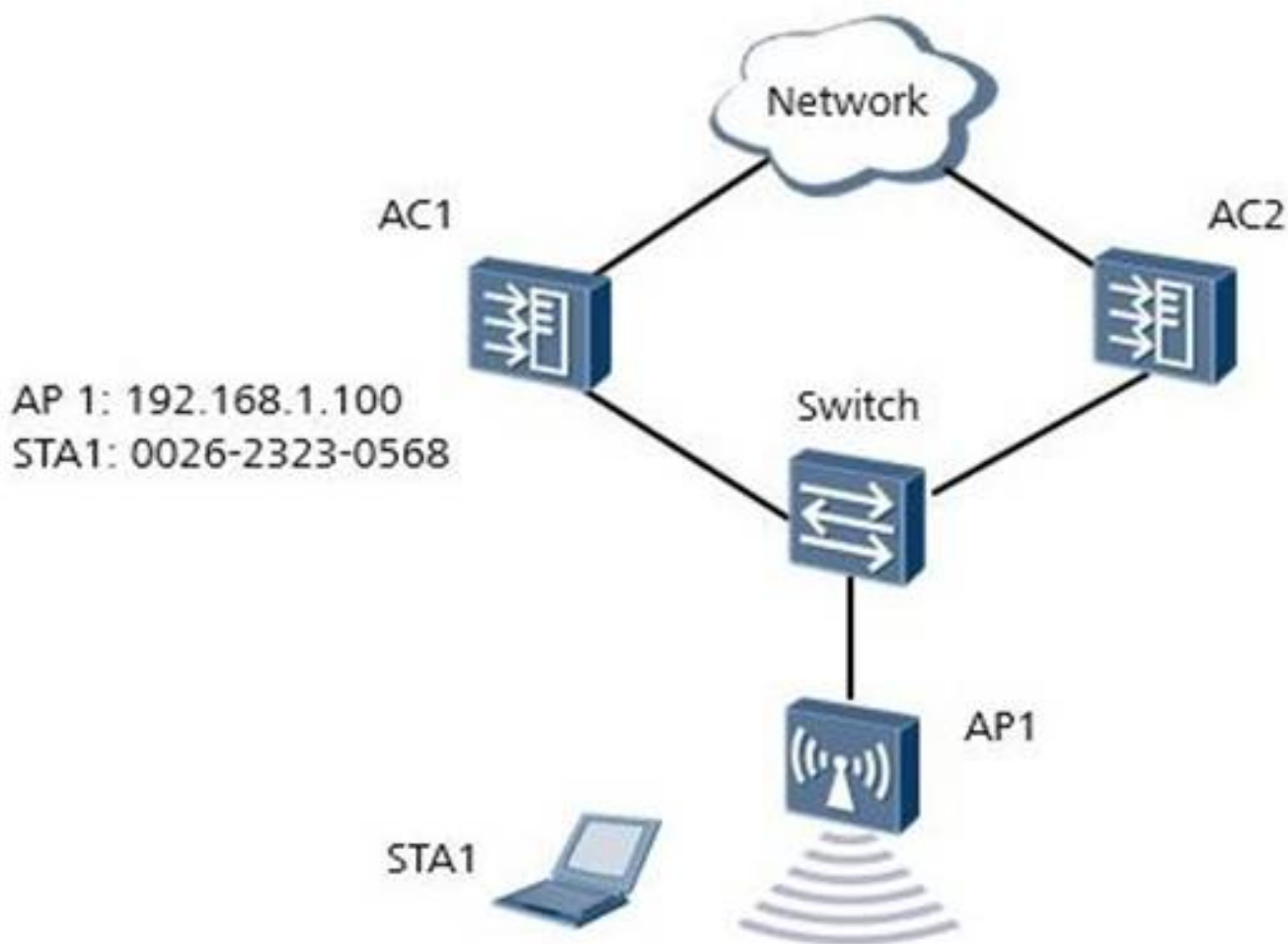
B. Some user information is manually created on the Agile Controller.

C. There are duplicate OU names on the AD directory servers, and OU-based synchronization is used.

D. The parameter configuration between the Agile Controller and an AD directory server is incorrect.

Answer: B,C,D

NO.9 In the dual-link cold backup network diagram, STA1 goes online through portal authentication, AP1 connects to AC1 (active AC), and STA1 goes online on AC1 through AP1.



Which of the following statements is TRUE? (Multiple Choice)

- A. AC2 saves STA1 information, and the status of STA1 is unauthenticated on AC2.
- B. AC2 saves AP1 information, and the status of AP1 is standby on AC2.
- C. AC2 does not save STA1 information.
- D. AC2 saves AP1 information, and the status of AP1 is normal on AC2.

Answer: B,C

NO.10 An enterprise building has a large number of employees and they usually connect to the company WLAN in the lobby when arriving at the company. As they move to their work locations, their mobile terminals roam to the current network coverage areas.

To ensure that each terminal obtains a fixed IP address, which of the following configurations is recommended?

- A. Configure a VLAN pool and set a VLAN assignment algorithm.
- B. Configure a VLAN pool and set the VLAN assignment algorithm to even.
- C. Do not configure a VLAN pool but configure a static IP address for each terminal.
- D. Configure a VLAN pool and set the VLAN assignment algorithm to hash.

Answer: D

NO.11 In smart roaming, to determine whether a neighbor AP with better signals exists, an 802.11k-incapable STA needs to start scanning to obtain neighbor AP information.

A. TRUE

B. FALSE

Answer: B

NO.12 Which of the following statements about rogue device countermeasure on a WLAN with the WIDS function enabled are TRUE? (Multiple Choice)

- A.** After an AC identifies a rogue STA, it sends rogue STA information to a monitor AP. The monitor AP sends a broadcast Deauthentication frame with the rogue STA's BSSID or MAC address.
- B.** After an AC identifies a rogue STA, it sends rogue STA information to a monitor AP. The monitor AP sends a unicast Deauthentication frame with the rogue STA's BSSID or MAC address.
- C.** After an AC identifies a rogue AP, it sends rogue AP information to a monitor AP. The monitor AP sends a unicast Deauthentication frame with the rogue AP's identity information.
- D.** After an AC identifies a rogue AP, it sends rogue AP information to a monitor AP. The monitor AP sends a broadcast Deauthentication frame with the rogue AP's identity information.

Answer: B,D

NO.13 What is the effect after the roaming aggressiveness of the wireless network adapter on a computer is set to a larger value?

- A.** The user's network access rate is increased.
- B.** The switching between APs is speeded up.
- C.** Wireless network adapter's activeness for automatic network selection is lowered.
- D.** The switching between SSIDs is speeded up.

Answer: B

NO.14 On a WLAN network with the WIDS function enabled, APs with the following SSIDs are detected:

- a [ssid1]
- b [ssid1]
- c [ssid1]
- d [ssid2]
- e [ssid2]
- f [ssid1]

MAC addresses of APs b and c are included in the MAC address whitelist. ssid2 is included in the SSID whitelist.

Which of these APs will be identified as rogue APs? (Multiple Choice)

- A.** b
- B.** a
- C.** f
- D.** c
- E.** d

Answer: B,C

NO.15 Which of the following commands is used to check whether automatic channel selection and automatic transmit power selection are enabled for APs?

- A.** [AC-wlan-view] display radio all

- B. [AC-wlan-view] display rrm-profile name profile-name
- C. [AC-wlan-view] display vap-profile name profile-name
- D. [AC-wlan-view] display station ssid wlan-net

Answer: B

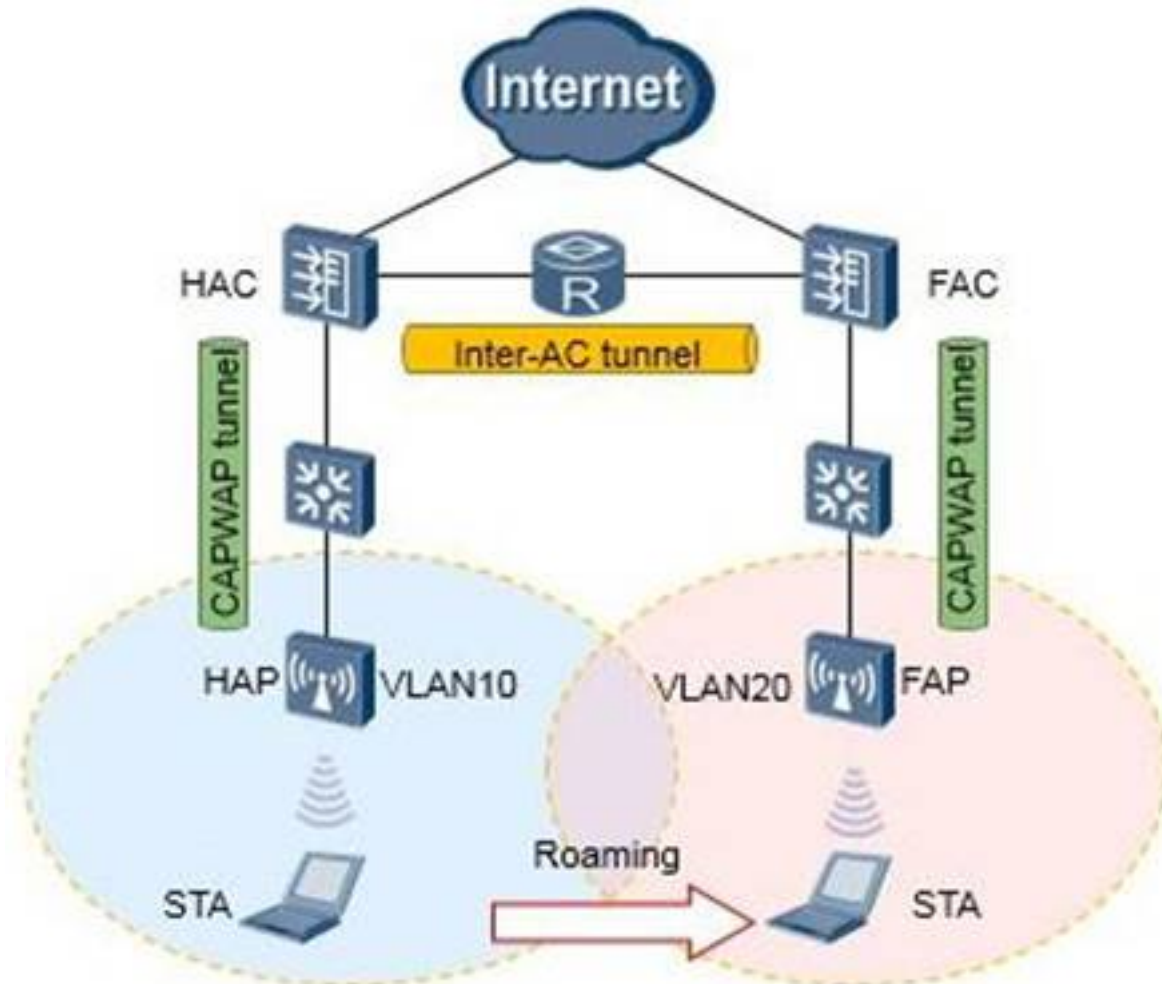
NO.16 A company has deployed a W1.AN, and all APs are transmitting WLAN services. The company needs to upgrade AP versions.

Which of the following upgrade methods is recommended to minimize the impact on user services?

- A. AP upgrade through the web system
- B. In-service AP upgrade
- C. AP upgrade in Boot mode
- D. Automatic AP upgrade

Answer: B

NO.17 According to the network, data traffic is transmitted in the STA-HAP-HAC-upper-layer network flow through tunnel forwarding before roaming.



What is the flow direction of data traffic after Layer 3 roaming?

- A. STA-FAP-FAC-HAC-upper-layer network
- B. STA-FAP-FAC-HAC-FAC-upper-layer network
- C. STA-FAP-FAC-upper-layer network

D. STA-FAP-FAC-HAC-HAP-HAC-upper-layer network

Answer: A

NO.18 After CAC based on channel usage is configured to control user access on an AP, if the current channel usage exceeds the configured threshold, the AP will reject access requests of new STAs and force STAs to log out until the channel usage is lower than the threshold.

A. FALSE

B. TRUE

Answer: A